

UPCOMING  
DATES &  
INFO.

- **Drafting of Community Plan 2030 (Winter '10)**
- **Steering Committee Meeting February 1 at 6:00 pm (Fishbowl)**
- **Design Workshop Visit March 8-10**
- **Update Sessions w/ Design Workshop March 8-10**
- **Public Hearings for Community Plan 2030 (Spring '10)**

INSIDE  
THIS ISSUE:

**Zoning Maps 2 vs. Land Use Maps**

**Steering Committee Member List**

# Branson Comprehensive Plan Steering Committee Newsletter

VOLUME 1, ISSUE 11

JANUARY 2011

## Comprehensive Plan Progress - January Update

While the rest of Branson becomes a little quieter after the first of the year, the Steering Committee, Design Workshop and city staff have been working hard to wrap the Comprehensive Planning Process up. Extensive planning is currently being done as the anticipation of the Community Plan 2030's unveiling continues to get closer. As a final step before the plan enters the public adoption process, the team is proposing to present portions of the draft plan to particular groups for their feedback. In a similar format to the interviews conducted with almost 100 community members back in June, Design Workshop, the Steering Committee and staff will be gathering small groups at City Hall in early March to hear first hand feedback and thoughts in regards to the plan. As many



Community members discuss their thoughts regarding the draft plan.

of the participants have been active in the entire process, it is important to make sure their opinions are presented accurately. It is the Steering Committee's goal to make sure

this document, which will be guiding Branson's decisions for the next 20 years, properly represents all of the input and responses from the community that have been received throughout the process. As it would be impossible to review the entire document with every member of the community, the team hopes those who are asked to participate will assist the team by going out into the community after their sessions and provide a summary to others through informal gatherings or similar



Community members get together to discuss the Community Plan.

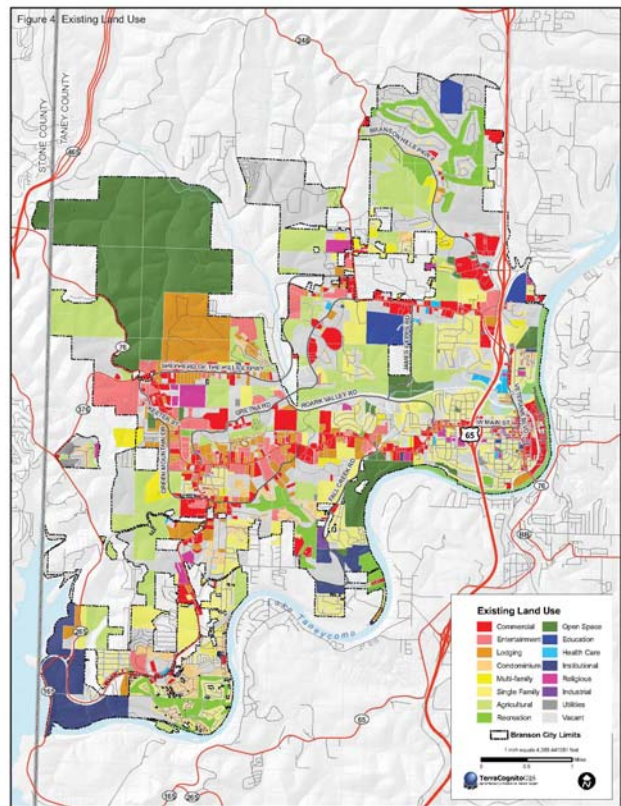
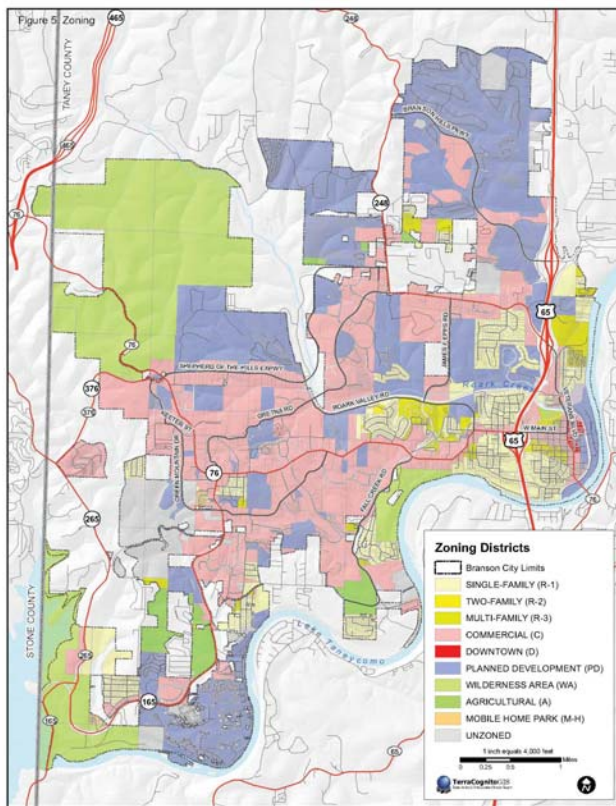
settings. It is very important to continue gaining the community's support for this document, which will be proposed in the coming months. The team and the community have worked very hard to understand what issues face Branson in the coming years and this document will ensure we face those issues with community supported solutions. Branson can only be as strong as its citizens, businesses and sense of community. We need your help now to protect these things.

## White Papers Now on Website

During the first week of the new year, Design Workshop uploaded the White Papers onto the Community Plan 2030 website ([www.BransonCompPlan.com](http://www.BransonCompPlan.com)). These existing conditions reports include community topics ranging from Land Use to Housing to Open Space and Recreation. They also include Community Character, Transportation, Economic Development, Community and Governance. This information pertaining to Branson, and the surrounding region, will provide a valuable baseline against which to evaluate future policies and actions. Members of the community are encouraged to go to the website and view one or all of the documents to gain a better understanding of Branson's current status. In order to prepare these White Papers for viewing, many hours were contributed by Design Workshop, the Steering Committee and staff to insure completeness and accurateness.



A fall sunset over the Lake Taneycomo Bridge.



# Zoning Maps vs. Land Use Maps

Within the Land Use White Paper, reference is made to the City's zoning and existing land use maps. Both provide information that is crucial to any planning effort, but they also have differences between them. The zoning and existing land use maps for the City of Branson are shown above for reference.

A zoning map is a graphic depiction of the boundaries for which a certain set of standards or regulations have been adopted by a governmental entity, in this case the City of Branson. The zoning map typically provides predictability for the residents and development community as to what type of land uses may be expected and allowed within each zone district. Land is divided into zone districts from the zoning code which describes the intent and regulations of each particular zone category. A typical zone district will set forth regulations for permitted land uses, building height, density, setbacks, minimum

lot sizes, etc. The City of Branson's codes and ordinances provide regulations for nine different zones. All remaining properties within the city limits are characterized as unzoned.

An existing land use map is a more detailed graphic representation of the activity that occurs on land and within the structures that occupy it. It simply refers to the physical uses of the land. The map above depicts 16 separate current land uses in Branson ranging from single family housing to entertainment.

One of the products the comprehensive plan, Community Plan 2030, will produce will be a future land use map for Branson. The map will provide guidance for future land uses as well as goals and policy statements to help direct development and infrastructure improvements for the public good.

# Steering Committee Member List

- Clark Harris, Chairman
- Brenda Romine, Vice-Chairperson
- Karen Best
- Dan Chinn
- Rick Davis
- Jane Friggle
- June Hartley
- Kevin Huddleston
- Dan Lennon
- Scott McCaulley
- Joe McDowell
- Autumn Page
- Dan Ruda
- Craig Wescott
- Jamie Whiteis
- Dave Woolery
- Staff - Jim Lawson, Garrett Anderson
- & Joel Hornickel